

High Pressure Hose Reels

Liquip offer two types of High Pressure Hose Reels - The FR and HR Series.

The FR series are a manual rewind and the HR series are a hydraulic rewind. Both are suitable for petroleum products and are available in different sizes.

The hose reels have robust construction – stiffened cheek plates, extremely sturdy thick wall manifold with added strength from steel inner drum, steel base frame and self aligning bearing.



HR SERIES
Hydraulic Rewind



FR SERIES
Manual Rewind

Key Features

- Flow area is equal to 38mm throughout.
- All components are easily replaced as required.
- Sealing is by lip seal.
- Built tough to last in the harshest conditions.
- All models are delivered in primed condition, ready for painting.
- Optional anti-rotation lock to prevent hose unravelling.

Technical Information

Pressure tested & rating	Up to 2,100 kPa
Periodic Service	Quarterly grease plumber block bearing
Mounting	4 x M10 Bolts
Variants	Can suit 25mm (1"), 32mm (1¼") & 38mm (1½") diameter hoses
Rewind Mechanism	HR Series - Hydraulic FR Series - Manual
Drum widths	300mm (12"), 400mm (18") or 600mm (24")

Ordering Information

Example - FR 12 HP2 M M

Rewind Mechanism	Width (drum)	High Pressure	Frame	Gooseneck
FR (Manual)	12	HP2	M -Mild Steel	M - 1½" Mild Steel
HR (Hydraulic)	18 24		G - Galvanised NP - Nickel Plated (Aviation)	LPG - 1" High Pressure LPG32 - 1¼" High Pressure NP - 1½" Nickel Plated NP32 - 1¼" Nickel Plated

Options Available (Contact Liquip for further details)

Gooseneck

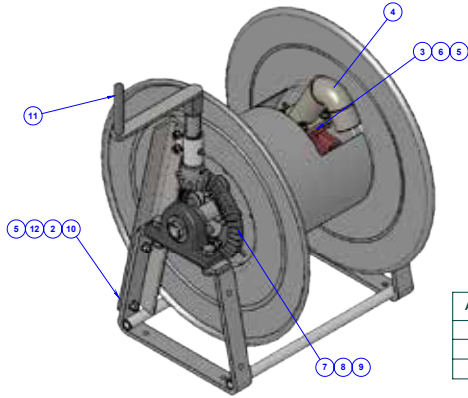
- R12-11: 1½" Mild Steel.
- R12-11NP: 1½" Nickel Plated.
- R12-11-32NP: 1¼" Nickel Plated.
- R12-11-LPG: 1" LPG.
- R12-11-LPG32: 1¼" LPG.

Motor

- LIQ5411: HYD MOTOR (WP & LPG DISP PUMP).
- LIQ5473: HYD MOTOR CHARLYNN 185CC.
- LIQ1295: HYD MOTOR DANFOSS (HOSEREEL).

NOTE: Contact Liquip for a flange/manifold and seal retrofit kit for replacing existing hose reels.





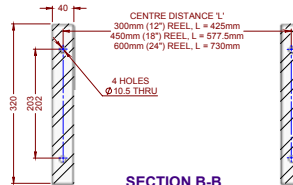
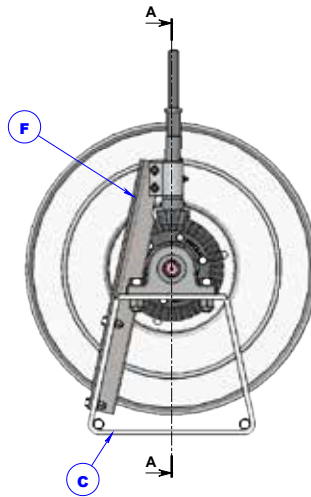
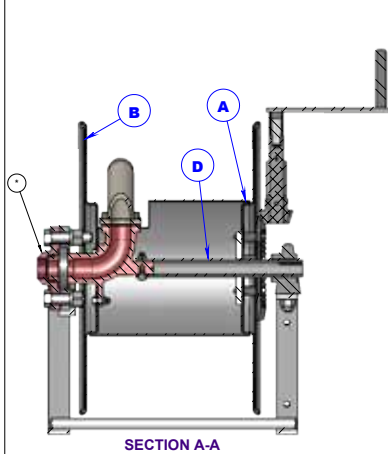
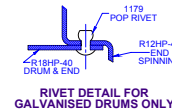
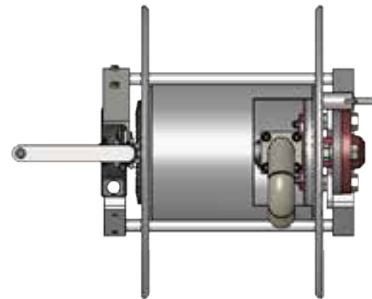
ASSEMBLY	WIDTH OF HOSE DRUM
FR12HP2	310 - 315mm
FR18HP2	460 - 465mm
FR24HP2	610 - 615mm

ITEM	PART NUMBER	DESCRIPTION	DESCRIPTION (CONT)	FR12HP2	FR12HP2NP	FR18HP2	FR18HP2NP	FR24HP2	FR24HP2NP	MATERIAL	GRADE	MASS (kg)	DWG NO	
1	R12HP2	HYDRAULIC HOSE REEL ASSEMBLY	12" HIGH PRESSURE	1	1	-	-	-	-	MILD STEEL		33.95	R55016	
	R18HP2	HYDRAULIC HOSE REEL ASSEMBLY	18" HIGH PRESSURE	-	-	1	1	-	-	MILD STEEL		35.77	R55016	
	R24HP2	HYDRAULIC HOSE REEL ASSEMBLY	24" HIGH PRESSURE	-	-	-	-	1	1	MILD STEEL		38.20	R55016	
2	0022	SETScrew HEX HD	3/8" BSW x 1.1M" LONG	2	2	2	2	2	2	ZIP STEEL	PCA6	0.0269		
3	0664	GASKET	FOR HOSE REEL GOOSENECKS	1	1	1	1	1	1	NBR CORK	ACN60	0.02	P664	
4	SEE NOTE	GOOSENECK ASSEMBLY	FOR HIGH PRESSURE HOSE REEL	1	-	1	-	1	-	STEEL		250	1.39	R033
	R12-11-32NP	GOOSENECK 1 1/2" BSPP	FOR AVIATION	-	1	-	1	-	1	NIP STEEL		250	1.37	R033
5	0109	WASHER SPRING	3/8" ASA MED	6	6	6	6	6	6	ZIP STEEL	MED	0.003		
6	0719	CAPSCREW IMPERIAL	3/8" BSW x 1" LONG	4	4	4	4	4	4	ZIP STEEL	ASTM A514	0.023		
7	FR12-5	CROWN WHEEL	FOR FR12 HOSE REEL	1	1	1	1	1	1	ALUMINIUM	AA601	0.70	F1050	
8	0015	SETScrew HEX HD IMP	5/16" BSW x 1.3-4" LONG HX HD	6	6	6	6	6	6	ZIP STEEL	250	0.0236		
9	0108	WASHER SPRING	5/16" ASA MED	6	6	6	6	6	6	ZIP STEEL	MED	0.002		
10	FR12HP-23	BRACKET FRONT REWIND	FOR HIGH PRESSURE HOSE REELS	1	1	1	1	1	1	STEEL	250	3.02	F1053	
11	R12-26	REWIND HANDLE FOR HP HOSE REEL		1	1	1	1	1	1	ZIP MILD STEEL	250	0.66	R09	
12	0130	NUT HEX	3/8" BSW	2	2	2	2	2	2	ZIP STEEL	250	0.008		
13	R12HP2-36	SEAL FLANGE	HIGH PRESSURE HOSE REEL	-	1	-	1	-	1	STAINLESS STEEL		2237.29	R55116	

FOR GALVANISED ASSEMBLIES (WITH G SUFFIX) SUBSTITUTE THE FOLLOWING COMPONENTS:
 A- DRUM AND END SPINNING WITH RxxHP-40
 B- END SPINNING WITH R12HP-41
 C- A-FRAME ASSEMBLY WITH RxxHP-42
 D- BEARING SUPPORT PIPE WITH RxxHP-43
 E- LOCK PIN ASSEMBLY WITH R12HP-44
 F- REWIND BRACKET WITH R12HP-45
 WHERE xx IS THE SIZE OF THE ASSEMBLY (12, 18 OR 24")

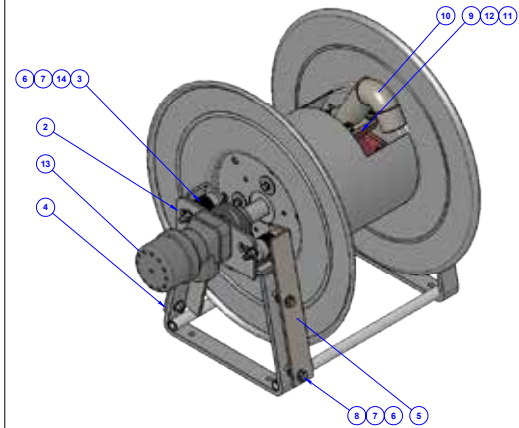
NOTES:

- ASSEMBLY NUMBERS AND SUFFIXES ARE DESCRIBED BELOW:
 e.g. FR12HPLPGZ
 12 - DENOTES SIZE OF REEL: 12, 18 or 24"
 LPG - DENOTES SERVICE: LPG OR NP FOR NICKEL PLATED (AVIATION)
 LM - DENOTES "LESS MOTOR", i.e. HYDRAULIC REWIND MOTOR NOT SUPPLIED
 G - DENOTES GALVANISED STEEL COMPONENTS
- FOR GOOSENECK USE:
 R12-11 1 1/2" BSPT (STANDARD)
 R12-11NP 1 1/2" BSPT (NICKEL PLATED)
 R12-11-LPG 1" NPS FEMALE (HIGH PRESSURE)
 R12-11-LPG32 1 1/2" NPT FEMALE (HIGH PRESSURE)
 R12-11-32NP 1 1/2" BSPP AVIATION (NICKEL PLATED)
- TEST REWIND HANDLE AND LOCKING BOLT FUNCTIONS CORRECTLY



DRAWING TITLE: HIGH PRESSURE HOSE REEL ASSEMBLIES: FRONT REWIND, 12", 18" & 24"		LIQUIP PART: FRxxHP2
MATERIAL: SEE PARTS LIST		ISSUE: 25/10/2016
HEAT TREATMENT: NONE		ASST DWG: N/A
PROTECTIVE TREATMENT: NONE		PART NO: N/A
REMOVE ALL SHARP EDGES AND BURRS		SCALE: 1:1
THIS IS CONFIDENTIAL INFORMATION IF IN DOUBT, ASK! DO NOT SCALE OFF DRAWING		DATE: 25/10/2016
THIS DRAWING AND DESIGN IS THE PROPERTY OF LIQUIP INTERNATIONAL PTY LTD. IT MUST NOT BE REPRODUCED OR REPRODUCED IN ANY WAY WHATSOEVER AND/OR PASSED ON TO ANY THIRD PARTY WITHOUT WRITTEN AUTHORITY.		DRAWING NO: F105016
Drawing No. F105016/001 FRxxHP2 25/10/2016 Model No. 107000001/Engineering@liquip.com/FR12HP2		ISSUE: A

A	RELEASED FOR PRODUCTION	DT	26/10/2016	
REV.	REVISION DESCRIPTION	BY	DATE	MDC REF

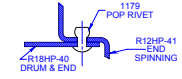
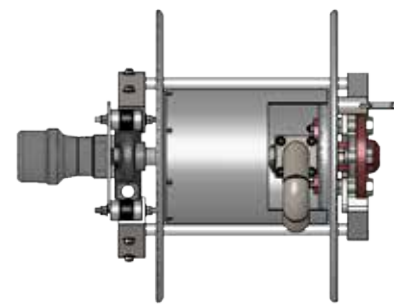


ASSEMBLY	WIDTH OF HOSE DRUM
HR12HP2	310 - 315mm
HR18HP2	460 - 465mm
HR24HP2	610 - 615mm

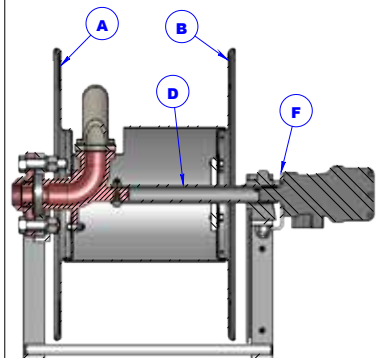
ITEM	PART NUMBER	DESCRIPTION	DESCRIPTION (CONT)	HR12HP2-LM	HR18HP2-LM	HR24HP2-LM	MATERIAL	GRADE	MASS (kg)	DWG No
1	R12HP2	HYDRAULIC HOSE REEL ASSEMBLY	12" HIGH PRESSURE	1	-	-	MILD STEEL		33.95	R55016
	R18HP2	HYDRAULIC HOSE REEL ASSEMBLY	18" HIGH PRESSURE	-	1	-	MILD STEEL		36.77	R55016
	R24HP2	HYDRAULIC HOSE REEL ASSEMBLY	24" HIGH PRESSURE	-	-	1	MILD STEEL		38.20	R55016
2	HR12HP-3	BRACKET MOTOR MOUNT	HYDRAULIC REWIND HOSE REEL	1	1	1	STEEL	250	0.85	H1056
3	R12HP-14	RUBBER MOUNT	FOR HYDRAULIC MOTOR	2	2	2	RUBBER/STEEL		0.30	R55013
4	HR12HP-4L	MOUNTING BRACKET FOR HYDRAULIC MOTOR	LEFT HAND SIDE	1	1	1	STEEL	300PLUS	1.35	H1057
5	HR12HP-4R	MOUNTING BRACKET FOR HYDRAULIC MOTOR	RIGHT HAND SIDE	1	1	1	STEEL	300PLUS	1.35	H1057
6	0102	WASHER FLAT	3/8" x 7/8" OD	12	12	12	Z/P STEEL	250	0.004	
7	0150	NUT NYLOC	3/8" BSW	8	8	8	Z/P STEEL	250	0.014	
8	0022	SETScrew HEX HD	3/8" BSW x 1 1/4" LONG	4	4	4	Z/P STEEL	PC4.6	0.029	
9	0664	GASKET	FOR HOSE REEL GOOSENECKS	1	1	1	NBR CORK	ACN60	0.022	P664
10	R12-11	GOOSENECK 1 1/2" BSPT	FOR HIGH PRESSURE HOSE REEL	1	1	1	STEEL	250	1.39	R033
11	0109	WASHER SPRING	3/8" ASA MED	4	4	4	Z/P STEEL	MED	0.003	
12	0719	CAPSCREW IMPERIAL	3/8" BSW x 1" LONG	4	4	4	Z/P STEEL	ASTM A574	0.023	
13	1295	MOTOR HYDRAULIC DANFOSS	OMR200 151-726500, 1" SHAFT	AS REQD	AS REQD	AS REQD	STEEL		15.00	
14	HR12HP-18	SPACER	FOR HR12HP	4	4	4	STEEL	ZINC PLATE TO FE/Zn/CA	0.13	H1058

FOR GALVANISED ASSEMBLIES (WITH G SUFFIX) SUBSTITUTE THE FOLLOWING COMPONENTS:
 A- DRUM AND END SPINNING WITH RxxxHP-40
 B- END SPINNING WITH R12HP-41
 C- A-FRAME ASSEMBLY WITH RxxxHP-42
 D- BEARING SUPPORT PIPE WITH RxxxHP-43
 E- LOCK PIN ASSEMBLY WITH R12HP-44
 F- MOTOR MOUNT BRACKET WITH R12HP-46
 G- MOTOR SUPPORT BRACKET (LEFT HAND) WITH R12HP-47
 H- MOTOR SUPPORT BRACKET (RIGHT HAND) WITH R12HP-48

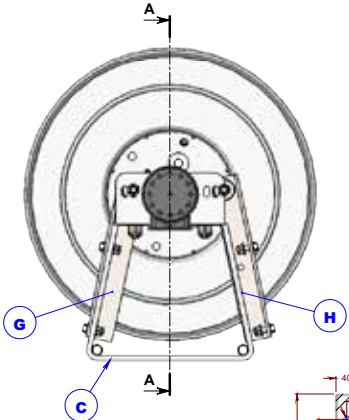
- NOTES:**
 1. ASSEMBLY NUMBERS AND SUFFIXES ARE DESCRIBED BELOW:
 e.g. HR12HP2LPG-LM2
 12" DENOTES SIZE OF REEL: 12, 18 or 24"
 LPG - DENOTES SERVICE, LPG or NP FOR NICKEL PLATED (AVIATION)
 LM - DENOTES "LESS MOTOR", i.e. HYDRAULIC REWIND MOTOR NOT SUPPLIED
 G - DENOTES GALVANISED STEEL COMPONENTS
 2. FOR GOOSENECK USE:
 R12-11 1 1/2" BSPT (STANDARD)
 R12-11NP 1 1/2" BSPT (NICKEL PLATED)
 R12-11-LPG 1" NPS FEMALE (HIGH PRESSURE)
 R12-11-LPG32 1 1/2" NPT FEMALE (HIGH PRESSURE)
 R12-11-32NP 1 1/2" BSPP AVIATION (NICKEL PLATED)
 3. FOR LPG VERSIONS, REPLACE NBR CORK GASKET FOR GOOSENECK (0664) WITH KLINGER GASKET 4241.



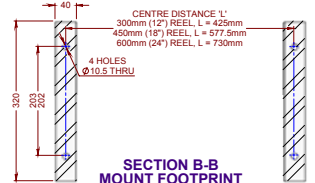
RIVET DETAIL FOR GALVANISED DRUMS ONLY (SEE NOTE 4)



SECTION A-A



SECTION B-B MOUNT FOOTPRINT



DRAWING TITLE: HYDRAULIC HOSE REEL ASSY FOR 12", 18" & 24" HIGH PRESSURE		LIQUIP PART: HRxxxHP2
MATERIAL: SEE PARTS LIST		DESIGN: 28/10/2016
HEAT TREATMENT: NONE		ASST DWG: N/A
PROTECTIVE TREATMENT: NONE		PART No: N/A
REMOVE ALL SWAMP EDGES AND BURRS		SCALE: 1:1
THIS IS CONFIDENTIAL INFORMATION IF IN DOUBT, ASK! DO NOT SCALE		DATE: 28/10/2016
INTERNATIONALS PTY LTD. IT MUST NOT BE REPRODUCED OR REPRODUCED IN ANY WAY WHATSOEVER AND/OR PASSED ON TO ANY THIRD PARTY WITHOUT WRITTEN AUTHORITY.		DRAWN BY: DT
Drawing No: Z:\eng\mfg\HR12HP2-LM.dwg Model No: Z:\eng\mfg\HR12HP2-LM		DATE: 28/10/2016
		ISSUE: A