



THIS IS CONFIDENTIAL INFORMATION.
THIS DRAWING AND DESIGN IS THE PROPERTY OF LIQUIP INTERNATIONAL PTY LIMITED.
IT MUST NOT BE COPIED OR REPRODUCED IN ANY WAY WHATSOEVER AND/OR PASSED ON
TO ANY THIRD PARTY WITHOUT WRITTEN AUTHORITY.

LIQUIP INTERNATIONAL PTY LIMITED - ENGINEERING DEPARTMENT - 13 HUME RD SMITHFIELD SYDNEY NSW AUSTRALIA 2164
PH: +61 2 9725 9000 FAX: +61 2 9609 4739 EMAIL: engineering@liquip-nsw.com.au

JUNCTION BOX

DATA SHEET

PART No: JB100
JB103

- TITLE:** Junction boxes for use with intrinsically safe wiring only to terminate & connect the gantry plug cable and overfill monitor.
- OPERATION:** Allows connection of gantry plug to overfill monitor, industry standard 3 or 4 bayonet 10 pin plug for intrinsically safe signals only and/or earthing connection.
- FEATURES:** A termination point to allow gantry plug component replacement without the need to access the overfill monitor's explosion proof housing. It will also protect the monitor's housing from damage and potential hazard exposure should a drive away occur. Provision for connection of the earth lead is provided. Includes hanger for cable loop spring.
- DISMANTLE:** Remove lid screws to access terminal connections.
- ADJUSTMENT:** None required.
- MOUNTING:** 2 x Ø8.5 holes through base allow for mounting with M8 bolts.
- TECHNICAL DATA:** JB100 comes with 2 x 3/4" NPS cable entries at top and bottom.
JB103 comes with 3 x 3/4" NPS cable entries at top, bottom and left hand side.
Adaptor for 3/4" NPS to female M25 supplied to suit gantry plug (x1 for JB100, x2 for JB103).
- ASSOCIATED EQUIPMENT:** GPxxx series gantry plugs
EACxxx series earthing clamps
RM1xx series rack monitors

Overall dimensions shown on the drawing overleaf.

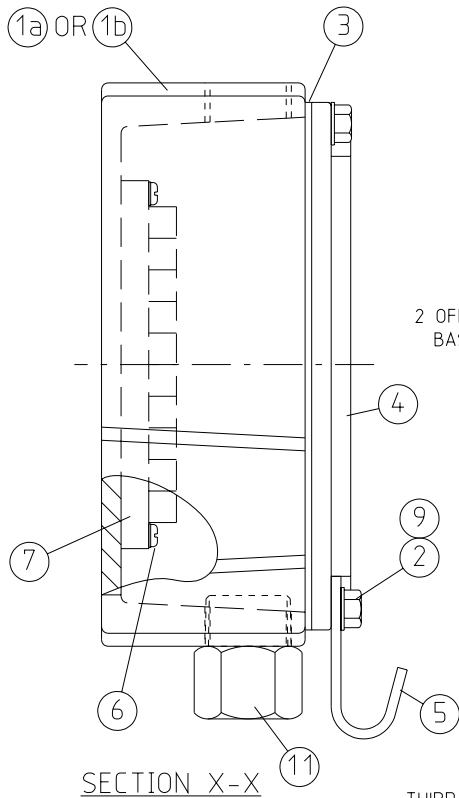


THIS IS CONFIDENTIAL INFORMATION.
THIS DRAWING AND DESIGN IS THE PROPERTY OF LIQUIP INTERNATIONAL PTY LIMITED.
IT MUST NOT BE COPIED OR REPRODUCED IN ANY WAY WHATSOEVER AND/OR PASSED ON
TO ANY THIRD PARTY WITHOUT WRITTEN AUTHORITY.

LIQUIP INTERNATIONAL PTY LIMITED - ENGINEERING DEPARTMENT - 13 HUME RD SMITHFIELD SYDNEY NSW AUSTRALIA 2164
 PH: +61 2 9725 9000 FAX: +61 2 9609 4739 EMAIL: engineering@liquip-nsw.com.au

LIQUIP

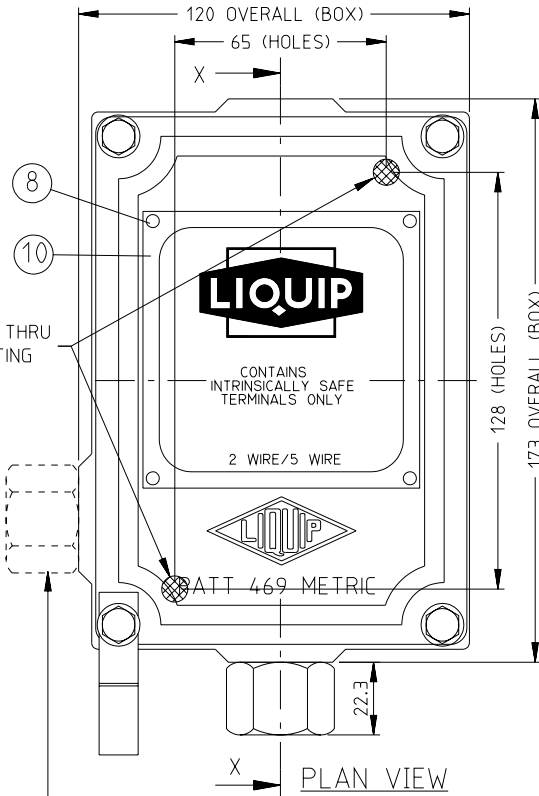
JB100 & JB103 JUNCTION BOX



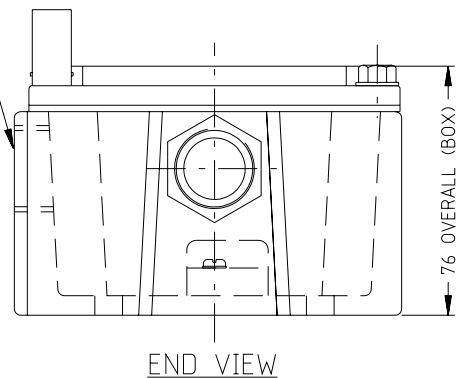
SECTION X-X

2 OFF $\varnothing 8.5$ HOLES THRU
 BASE FOR MOUNTING

THIRD CABLE ENTRY
 POSITION (FOR JB103)



PLAN VIEW



END VIEW

ITEM	PART No	DESCRIPTION	MATERIAL	JB100 QTY	JB103 QTY
1a	JB100-1	BODY - 2 x 3/4" NPS PORTS	ALUMINIUM	1	-
1b	JB103-1	BODY - 3 x 3/4" NPS PORTS	ALUMINIUM	-	1
2	4920	SETSCREW HEX HEAD	Z/P STEEL	4	4
3	4279	GASKET	NEOCORK	1	1
4	JB100-2	COVER	ALUMINIUM	1	1
5	JB100-4	CABLE HOOK	ALUMINIUM	1	1
6	4960	SCREW THREAD CUTTING	Z/P STEEL	2	2
7	5026	BLOCK STRIP TERMINAL	P/E PLASTIC	1	1
8	4885	HAMMER DRIVE SCREW	Z/P STEEL	4	4
9	5267	WASHER FLAT	Z/P STEEL	4	4
10	4753	LABEL	PLASTIC	1	1
11	7191	ADAPTOR M25 FEMALE TO 3/4" NPT MALE	BRASS	1	2

JB100 HAS 3/4" NPS CABLE ENTRIES TOP AND BOTTOM ONLY
 JB103 HAS 3/4" NPS CABLE ENTRIES TOP, BOTTOM AND ONE IN THE SIDE

X650110

Issue: A

METERS - VALVES - VENTS - MANHOLES - PUMPS - HOSEREELS - OVERFILL PROTECTION - LOADING ARMS - ELECTRONIC DIPSTICKS



LIQUIP INTERNATIONAL PTY LTD

PO Box 7049
 Wetherill Park BC, 2164
 Sydney NSW Australia
 Phone: +612 9725 9000
 Fax: +612 9725 1252

DISTRIBUTORS

See website
 for Liquip branches
 and Distributors

www.liquip.com